



# forestry, fisheries & the environment

Department:  
Forestry, Fisheries and the Environment  
REPUBLIC OF SOUTH AFRICA

Private Bag X447, Pretoria, 0001, Environment House, 473 Steve Biko Road, Pretoria, 0002 Tel: +27 12 399 9000, Fax: +27 86 625 1042

**DFFE Reference:** 14/12/16/3/3/2/2162/2

**Enquiries:** Ms Trisha Pillay

**Telephone:** (012) 399 9406 **E-mail:** TPillay@dfffe.gov.za

Mr Peter Carl Venn  
Umbila Emoyeni Three (Pty) Ltd  
PO Box 639  
Northlands  
**JOHANNESBURG**  
2196

Cell phone Number: (083) 689 3063  
Email address: Peter.venn@seritigreen.com

## PER EMAIL

Dear Mr Venn

**APPLICATION FOR AMENDMENT OF THE ENVIRONMENTAL AUTHORISATION (SPLITTING AND REISSUE OF EA) ISSUED ON 27 JANUARY 2023, AS AMENDED IN TERMS OF THE NATIONAL ENVIRONMENTAL MANAGEMENT ACT, ACT NO. 107 OF 1998, AS AMENDED: FOR THE DEVELOPMENT OF THE UMMBILA EMOYENI DISTRIBUTION ELECTRICAL GRID INFRASTRUCTURE ASSOCIATED WITH UMMBILA EMOYENI TWO AND THREE WIND ENERGY FACILITIES, MPUMALANGA PROVINCE**

The Environmental Authorisation (EA) for the abovementioned application issued by this Department on 27 January 2023, the amendments to the EA dated 17 February 2023, 15 May 2023 and 13 August 2024, your application for amendment received by the Department on 28 February 2025, the acknowledgement letter dated 10 March 2025 and the additional information received by the Department on 19 March 2025, refer.

Based on a review of the reason for requesting an amendment to the above EA, this Department, in terms of Chapter 5, Regulation 27(2)(a) of the Environmental Impact Assessment Regulations, 2014 as amended, has decided to amend the EA dated 27 January 2023 as amended by issuing a new EA.

**The applicant applied for the following amendments:**

### **Amendment 1: Amendment to change the holder of the EA:**

#### **From:**

*Umbila Emoyeni (RF) (Pty) Ltd*



**Batho pele-** putting people first

The processing of personal information by the Department of Forestry, Fisheries and the Environment is done lawfully and not excessive to the purpose of processing in compliance with the POPI Act, any codes of conduct issued by the Information Regulator in terms of the POPI Act and / or relevant legislation providing appropriate security safeguards for the processing of personal information of others.

*MS*

**To:**

*Umbila Emoyeni Three (Pty) Ltd*

**Reason for Amendment**

The holder of the EA has changed and this needs to be reflected in the EA.

**Amendment 2: Amendment to split the grid connection infrastructure into Transmission components (400kV), Distribution components (132kV) and IPP components such that each has its own separate EA and Environmental Management Programme (EMPr):**

**From:**

<b>Grid connection infrastructure</b>
<p>The grid connection infrastructure will include:</p> <ul style="list-style-type: none"> <li>• A new 400/132kV Main Transmission Substation (MTS), to be located adjacent to the Camden SOL Overhead Lines (OHLs).</li> <li>• A new collector stations (3): each will comprise several incoming 132kV lines from each project switching station, feeder bays, 132kV bus bars and outgoing 132kV line to the MTS.</li> <li>• Two 400kV loop-in loop-out OHLs to the existing Camden-Sol 400kV transmission line.</li> <li>• On-site switching stations (132kV in capacity) at each renewable energy facility.</li> <li>• 132kV power lines from the switching stations to the collector substations and ultimately to a new MTS. On-site IPP substations where the generated power will be transformed from 33kV to 132kV so that it can be evacuated to the Collector stations and MTS.</li> <li>• Access roads up to 12m wide.</li> </ul>

**To:**

<b>Transmission components</b>	<p>The grid connection infrastructure will include:</p> <ul style="list-style-type: none"> <li>• A new 400/132kV Main Transmission Substation (MTS), to be located adjacent to the Camden SOL Overhead Lines (OHLs).</li> <li>• Two 400kV loop-in loop-out OHLs to the existing Camden-Sol 400kV transmission line.</li> <li>• Access roads up to 12m wide.</li> </ul>
<b>Distribution components</b> <i>Umbila Emoyeni One and Four Electrical Grid Infrastructure</i>	<p>The grid connection infrastructure will include:</p> <ul style="list-style-type: none"> <li>• On-site switching station (132kV in capacity) associated with the Umbila Emoyeni One and Four Wind Energy Facilities.</li> <li>• On-site switching station (132kV in capacity) associated with the Umbila Emoyeni PV Facility.</li> <li>• 132kV power line from the switching stations to the collector substation and ultimately to a new MTS.</li> <li>• Access roads up to 12m wide.</li> </ul>

<b>Distribution components</b> <i>Umbila Emoyeni Two and Three Electrical Grid Infrastructure</i>	<i>The grid connection infrastructure will include:</i> <ul style="list-style-type: none"> <li>• On-site switching stations (132kV in capacity) associated with the Umbila Emoyeni Two and Three Wind Energy Facilities.</li> <li>• 132kV power lines from the switching station to the collector substations and ultimately to a new MTS.</li> <li>• Access roads up to 12m wide.</li> </ul>
<b>Distribution components</b> <i>Umbila Emoyeni Five Electrical Grid Infrastructure</i>	<i>The grid connection infrastructure will include:</i> <ul style="list-style-type: none"> <li>• On-site switching station (132kV in capacity) associated with the Umbila Emoyeni Five Wind Energy Facility.</li> <li>• 132kV power line from the switching stations to the collector substations and ultimately to a new MTS.</li> <li>• Access roads up to 12m wide.</li> </ul>
<b>IPP components</b>	<i>The grid connection infrastructure will include:</i> <ul style="list-style-type: none"> <li>• New collector stations (3): each will comprise several incoming 132kV lines from each project switching station, feeder bays, 132kV bus bars and outgoing 132kV line to the MTS.</li> <li>• 132kV power line from the IPP onsite substation within WEF 4 to the WEF1 switching station</li> <li>• Access roads up to 12m wide.</li> </ul>

### Reason for the amendment

The applicant is proposing to split the EA into five EAs. The applicant requires that the EA for the Umbila Emoyeni Electrical Grid Infrastructure be split into Transmission components (400kV), Distribution components (132kV) and IPP components such that each has its own separate EA and Environmental Management Programme (EMPr). The split of the EA into five EAs is required to ensure that the electrical grid infrastructure can be handed over to Eskom (Distribution) and the National Transmission Company South Africa (NTCSA) following completion of construction, in accordance with Eskom and NTCSA's requirements.

The attached EA will replace the EA dated 27 January 2023, as amended. All further amendments must be lodged on the attached EA.

### General

In terms of the Promotion of Administrative Justice Act, Act No. 3 of 2000, you are entitled to the right to fair, lawful, and reasonable administrative action; and to written reasons for administrative action that affects you negatively. Further your attention is drawn to the provisions of the Protection of Personal Information Act, Act No. 4 of 2013 which stipulates that the Department should conduct itself in a responsible manner when collecting, processing, storing, and sharing an individual or another entity's personal information by holding the Department accountable should the Department abuse or compromise your personal information in any way.

In terms of Regulation 4(2) of the Environmental Impact Assessment Regulations, 2014, as amended (the EIA Regulations), you are instructed to notify all registered interested and affected parties, in writing and within

**Batho pele-** putting people first

14 (fourteen) days of the date of the decision as well as the provisions regarding the submission of appeals that are contained in the Regulations.

Your attention is drawn to Chapter 2 of National Environmental Management Act, Act No. 107 of 1998 National Appeal Regulations published under Government Notice R993 in Government Gazette No. 38303 dated 08 December 2014 (National Appeal Regulations, 2014), which prescribe the appeal procedure to be followed. Kindly include a copy of this document (National Appeal Regulations, 2014) with the letter of notification to interested and affected parties in this matter.

Should any person wish to lodge an appeal against this decision, he/she must submit the appeal to the appeal administrator, and a copy of the appeal to the applicant, any registered interested and affected party, and any organ of state with interest in the matter within twenty (20) days from the date that the notification of the decision was sent to the registered interested and affected parties by the applicant; or the date that the notification of the decision was sent to the applicant by the Department, whichever is applicable.

**Appeals must be submitted in writing in the prescribed form to:**

The Director: Appeals and Legal Review of this Department at the below mentioned addresses.

By email:           appeals@dfre.gov.za

By hand:           Environment House  
473 Steve Biko Road  
Arcadia  
**PRETORIA**  
0083

By post:           Private Bag X447  
**PRETORIA**  
0001

Please note that in terms of Section 43(7) of the National Environmental Management Act, Act No. 107 of 1998, as amended, the lodging of an appeal will suspend the environmental authorisation, or any provision or condition attached thereto. In the instance where an appeal is lodged, you may not commence with the activity until such time that the appeal is finalised.

To obtain the prescribed appeal form and for guidance on the submission of appeals, please visit the Department's website at [https://www.dfre.gov.za/documents/forms#legal\\_authorisations](https://www.dfre.gov.za/documents/forms#legal_authorisations) or request a copy of the documents at [appeals@dfre.gov.za](mailto:appeals@dfre.gov.za).

Yours faithfully



**Dr Sabelo Malaza**  
**Chief Director: Integrated Environmental Authorisations**  
**Department of Forestry, Fisheries and the Environment**  
Date: 15/04/2025



## forestry, fisheries & the environment

Department:  
Forestry, Fisheries and the Environment  
REPUBLIC OF SOUTH AFRICA

# Environmental Authorisation

In terms of Regulation 25 of the Environmental Impact Assessment Regulations, 2014, as amended

**THE DEVELOPMENT OF UMMBILA EMOYENI DISTRIBUTION ELECTRICAL GRID INFRASTRUCTURE  
ASSOCIATED WITH UMMBILA EMOYENI TWO AND THREE WIND ENERGY FACILITIES,  
MPUMALANGA PROVINCE**

**Gert Sibande District Municipality**

<b>Authorisation register number:</b>	14/12/16/3/3/2/2162/2
<b>Last amended:</b>	<i>Splitting and Re-Issue</i> <i>First Issue: 27 January 2023</i>
<b>Holder of authorisation:</b>	<i>Umbila Emoyeni Three (Pty) Ltd</i>
<b>Location of activity:</b>	<i>Farm 268- The Brakfontein Settlement (Portions 6, 7, 10, 11 and 12); Farm 261- Naudesfontein IS (Portions 15 and 21); Farm 264- Geluksplaats (Portions 0, 3, 4, 5, 6, 8, 9, 10, 11 and 12); Farm 423- Bekkersrust (Portions 0, 1, 2, 4, 5, 6, 10, 11, 12, 13, 14, 15, 19, 20, 22, 23, 24 and 25); Farm 422- Klipfontein (Portions 5, 8, 9, 13, 14, 16, 17, 19 and 20); Farm 458- Goedgedacht (Portions 18, 25, 27 and 33); Farm 420- Rietfontein (Portions 8, 9, 10, 11, 12, 15, 16, 18, 19, 22 and 32); Farm 421- Sukkelaar (Portions 2, 25, 39 and 40); within Ward 15 of Govan Mbeki Local Municipality; Ward 12 of Lekwa Local Municipality; Ward 8 of Msukaligwa Local Municipality; Gert Sibande District Municipality; Mpumalanga Province.</i>

This authorisation does not negate the holder of the authorisation's responsibility to comply with any other statutory requirements that may be applicable to the undertaking of the activity.

*MS*

## Decision

The Department is satisfied, on the basis of information available to it and subject to compliance with the conditions of this Environmental Authorisation, that the applicant should be authorised to undertake the activities specified below.

Non-compliance with a condition of this Environmental Authorisation may result in criminal prosecution or other actions provided for in the National Environmental Management Act, Act No. 107 of 1998, as amended and the EIA Regulations, 2014, as amended.

Details regarding the basis on which the Department reached this decision are set out in Annexure 1.

## Activities authorised

By virtue of the powers conferred on it by the National Environmental Management Act, Act No. 107 of 1998, as amended and the Environmental Impact Assessment Regulations, 2014, as amended, the Department hereby authorises –

### **UMMBILA EMOYENI THREE (PTY) LTD**

(hereafter referred to as the **holder of the authorisation**)

with the following contact details –

Mr Peter Carl Venn  
Umbila Emoyeni Three (Pty) Ltd  
PO Box 639  
Northlands  
**JOHANNESBURG**  
2196

Cell phone Number: (083) 689 3063  
Email address: Peter.venn@seritigreen.com

to undertake the following activities (hereafter referred to as “the activity”) indicated in Listing Notice 1, Listing Notice 2 and Listing Notice 3 of the EIA Regulations, 2014 as amended:

Activity number	Activity description
<p><u>Listing Notice 1 Item 11(i):</u></p> <p><i>“The development of facilities or infrastructure for the transmission and distribution of electricity- (i) outside urban areas or industrial complexes with a capacity of more than 33 but less than 275kV.</i></p>	<p>The development will include on-site switching station (Eskom Portion) (132kV in capacity) at each renewable energy facility and 132kV power lines from the switching stations to a new MTS.</p>
<p><u>Listing Notice 1, Item 12(ii)(a)(c):</u></p> <p><i>The development of – (ii) Infrastructure or structures with a physical footprint of 100 square metres or more Where such development occurs- (a) within a watercourse; or (c) within 32 metres of a watercourse.</i></p>	<p>The development of the Umbila Emoyeni Two and Three Distribution EGI will require the establishment of infrastructure with a physical footprint exceeding 100m<sup>2</sup>. The development footprint of the onsite switching station will be approximately 5ha in extent. The project site is associated with the presence of freshwater/drainage features.</p>
<p><u>Listing Notice 1, Item 14:</u></p> <p><i>The development and related operation of facilities and infrastructure, for the storage, or for the storage and handling, of a dangerous good, where such storage occurs in containers with a combined capacity of 80 cubic metres or more but not exceeding 500 cubic metres</i></p>	<p>The development and operation of the Umbila Emoyeni Two and Three Distribution EGI will require infrastructure for up to 80m<sup>3</sup> of storage of dangerous goods, which will include flammable and combustible liquids such as oils associated with the 132kV switching station, lubricants and solvents.</p>
<p><u>Listing Notice 1, Item 19(i)</u></p> <p><i>The infilling or depositing of any material of more than 10 cubic metres into, or the dredging, excavation, removal or moving of soil, sand, shells, shell grit, pebbles or rock of more than 10 cubic metres from a (i) Watercourse</i></p>	<p>During the construction phase, more than 10m<sup>3</sup> of rock will be removed from the water features for the development of the Umbila Emoyeni Two and Three Distribution EGI and associated access roads.</p>
<p><u>Listing Notice 1, Item 24(ii)</u></p> <p><i>The development of a road –</i></p>	<p>The construction of the Umbila Emoyeni Two and Three Distribution EGI will require the construction of</p>

<i>(ii) with a reserve wider than 13.5m, or where no reserve exists where the road is wider than 8m.</i>	new access roads of 12m wide, in areas where no road reserve exists to provide access to the facility.
<p><u>Listing Notice 1, Item 28(ii)</u></p> <p><i>Residential, mixed, retail, commercial, industrial, or institutional developments where such land was used for agriculture, game farming, equestrian purposes or afforestation on or after 01 April 1998 and where such development:</i></p> <p><i>(ii) will occur outside an urban area, where the total land to be developed is bigger than 1ha</i></p>	<p>The Ummbila Emoyeni Two and Three Distribution EGI (considered to be an industrial development) will be constructed and operated on land currently zoned for agriculture. The development footprint considered for the onsite switching station is 5ha and the power lines (which will be placed within servitudes of 18m (132kV lines)). The infrastructure will be located outside an urban area.</p>
<p><u>Listing Notice 1, Item 56(ii)</u></p> <p><i>The widening of a road by more than 6 metres, or the lengthening of a road by more than 1 kilometre</i></p> <p><i>(ii) where no reserve exists, where the existing road is wider than 8 metres</i></p>	<p>Existing farm roads within the project site may require widening, and access roads will be widened by more than 6 metres.</p>
<p><u>Listing Notice 2, Item 15</u></p> <p><i>The clearance of an area of 20ha or more of indigenous vegetation.</i></p>	<p>The project will require the clearance of an area of 5ha for the onsite switching station of vegetation, as well as vegetation associated with the laydown areas and tower positions within the power line servitude. The project would result in the clearance of an area of indigenous vegetation greater than 20ha in extent.</p>
<p><u>Listing Notice 3, Item 4(f)(i)(ee):</u></p> <p><i>The development of a road wider than 4 metres with a reserve less than 13.5 metres.</i></p> <p><i>f. Mpumalanga</i></p> <p><i>i. Outside urban areas:</i></p> <p><i>(ee) Critical biodiversity areas as identified in systematic biodiversity plans adopted by the competent authority or in bioregional plans</i></p>	<p>The development of the Ummbila Emoyeni Two and Three Distribution EGI will require the development of a 6m wide service road under the power line in the Mpumalanga Province and outside urban areas. The project site is associated with the presence of a CBA1: Optimal (Terrestrial) and a CBA1: Irreplaceable (Freshwater).</p>
<p><u>Listing Notice 3, Item 10(f)(i)(cc)(ee)(hh)</u></p> <p><i>The development and related operation of facilities or infrastructure for the storage, or storage and</i></p>	<p>The development and operation of the onsite switching station and power lines will require</p>



<p><i>handling of a dangerous good where such storage occurs in containers with a combined capacity of 30 but not exceeding 80 cubic metres</i></p> <p><i>f. Mpumalanga</i></p> <p><i>i. Outside urban areas</i></p> <p><i>(cc) Sensitive areas as identified in an environmental management framework as contemplated in chapter 5 of the Act and as adopted by the competent authority.</i></p> <p><i>(ee) Critical biodiversity areas as identified in systematic biodiversity plans adopted by the competent authority or in bioregional plans.</i></p> <p><i>(hh) Areas within a watercourse or wetland, or within 100 metres of a watercourse or wetland.</i></p>	<p>infrastructure for up to 80m<sup>3</sup> of storage of dangerous goods, which will include flammable and combustible liquids such as oils associated with the switching station, lubricants and solvents. The site is associated with the presence of freshwater/drainage features, a CBA1: Optimal (Terrestrial) and a CBA1: Irreplaceable (Freshwater) and is located within the Mpumalanga Province and outside urban areas. Further, parts of the site are located in areas which could be considered sensitive in terms of the Gert Sibande District Environmental Management Framework (EMF).</p>
<p><u>Listing Notice 3, Item 12(f)(ii)</u></p> <p><i>The clearance of an area of 300m<sup>2</sup> or more of indigenous vegetation within:</i></p> <p><i>b. Mpumalanga</i></p> <p><i>ii. Within critical biodiversity areas identified in bioregional plans.</i></p>	<p>The Ummbila Emoyeni Two and Three Distribution EGI development will require clearance in excess of 300m<sup>2</sup> within areas classified as CBA1: Optimal (Terrestrial) and CBA1: Irreplaceable (Freshwater) in the Mpumalanga Province.</p>
<p><u>Listing Notice 3, Item 14(ii)(a)(c)(f)(i)(dd)(ff)</u></p> <p><i>The development of—</i></p> <p><i>(ii) infrastructure or structures with a physical footprint of 10 square metres or more; where such development occurs—</i></p> <p><i>(a) within a watercourse; or</i></p> <p><i>(c) within 32 metres of a watercourse, measured from the edge of a watercourse.</i></p> <p><i>f. ii. Outside urban areas:</i></p> <p><i>(dd) Sensitive areas as identified in an environmental management framework as contemplated in chapter 5 of the Act and as adopted by the competent authority</i></p>	<p>The development of Ummbila Emoyeni Two and Three Distribution EGI will require the establishment of infrastructure with a physical footprint exceeding 10m<sup>2</sup>. The site is associated with the presence of freshwater/drainage features, a CBA1: Optimal (Terrestrial) and a CBA1: Irreplaceable (Freshwater), and is located within the Mpumalanga Province, and outside urban areas. Further, parts of the site are located in areas which could be considered sensitive in terms of the Gert Sibande District Environmental Management Framework (EMF).</p>

(ff) Critical biodiversity areas or ecosystem service areas as identified in systematic biodiversity plans adopted by the competent authority or in bioregional plans. Mpumalanga	
<p><u>Listing Notice 3, Item 18(f)(i)(ee)</u></p> <p>The widening of a road by more than 4 metres, or the lengthening of a road by more than 1 kilometre.</p> <p>f. Mpumalanga</p> <p>i. Outside urban areas:</p> <p>(ee) Critical biodiversity areas or ecosystem service areas as identified in systematic biodiversity plans adopted by the competent authority or in bioregional plans.</p>	<p>The development of the Ummbila Emoyeni Two and Three Distribution EGI will require the widening of roads by more than 4m, outside urban areas, and within areas classified as CBA1: Optimal (Terrestrial) and CBA1: Irreplaceable (Freshwater) in the Mpumalanga Province.</p>

- as described in the Environmental Impact Assessment Report (EIAR) dated November 2022 and the Amendment Application submitted to this Department on 28 February 2025 for the development of Ummbila Emoyeni Distribution Electrical Grid Infrastructure associated with Ummbila Emoyeni Two and Three Wind Energy Facilities, Mpumalanga Province, hereafter referred to as "the property".

The SG 21-digit codes are attached as Annexure 3.

#### Coordinates:

	Latitude	Longitude
Site Coordinates (centre of project site)- Phase Two	26°30'53.31"S	29°34'00.71"E
Site Coordinates (centre of project site)- Phase Three	26°32'34"S	29°35'55.68"E

Co-ordinates of onsite switching stations	Latitude	Longitude
WEF 2&3	26°32'46.38"S	29°35'55.68"E

**Coordinates of 132kV power lines (the centre of each corridor):**

WEF2&3 OHL	Latitude	Longitude
<b>Substation to Collector 1</b>		
Start	26 ° 36'53.51 "S	29 ° 36'13.46"E
Middle	26 ° 36'54.90"S	29 ° 35'59.97"E
End point	26 ° 37'4.30"S	29 ° 35'54.20"E
<b>Collector 3 to Collector 1</b>		
Start	26 ° 43'42.22"S	29 ° 40'49.00"E
Middle	26 ° 40'24.23"S	29 ° 37'20.70"E
End point	26 ° 37'4.73"S	29 ° 35'56.91 "E

WEF2&3 Roads	Latitude	Longitude
<b>Substation to Collector 1</b>		
Start	26 ° 36'53.51 "S	29 ° 36'1 13.46"E
Middle	26 ° 36'54.90"S	29 ° 35'59.97"E
End Point	26 ° 37'4.30"S	29 ° 35'54.20"E
<b>Collector 3 to Collector 1</b>		
Start	26 ° 43'42.22"S	29 ° 40'49.00"E
Middle	26 ° 40'24.23"S	29 ° 37'20.70"E
End point	26 ° 37'4.73"S	29 ° 35'56.91 "E
<b>Collector 1 to MTS</b>		
Start	26 ° 37'9.83"S	29 ° 35'53.27"E
Middle	26 ° 37'47.15"S	29 ° 35'29.11"E
End point	26 ° 38'32.13"S	29 ° 35'21.88"E

The grid connection infrastructure will include:

- On-site switching stations (132kV in capacity) associated with the Ummbila Emoyeni Two and Three Wind Energy Facilities.
- 132kV power lines from the switching station to the collector substations and ultimately to a new MTS.
- Access roads up to 12m wide.

Technical details of the Grid:

Infrastructure	Footprint and Dimensions
Onsite switching stations	<ul style="list-style-type: none"><li>• Development footprint: 1x Switching station of 5ha</li><li>• Capacity: 132kV</li></ul>
132kV power lines	<ul style="list-style-type: none"><li>• Servitude width: 31m</li><li>• Height: up to 40m</li><li>• Length: 40km</li><li>• Corridor width for assessment in EIA: 300m</li></ul>
Height of the power line towers (pylons)	<ul style="list-style-type: none"><li>• 40m</li></ul>

## Conditions of this Environmental Authorisation

### Scope of authorisation

1. The development of Ummbila Emoyeni Two and Three Electrical Distribution Grid Infrastructure, Mpumalanga Province is approved as per the geographic coordinates cited in the tables above.
2. Authorisation of the activity is subject to the conditions contained in this Environmental Authorisation, which form part of the Environmental Authorisation and are binding on the holder of the authorisation.
3. The holder of the authorisation is responsible for ensuring compliance with the conditions contained in this Environmental Authorisation. This includes any person acting on the holder's behalf, including but not limited to, an agent, servant, contractor, sub-contractor, employee, consultant or person rendering a service to the holder of the authorisation.
4. The activities authorised may only be carried out at the property as described above.
5. Any changes to, or deviations from, the project description set out in this Environmental Authorisation must be approved, in writing, by the Department before such changes or deviations may be effected. In assessing whether to grant such approval or not, the Department may request such information as it deems necessary to evaluate the significance and impacts of such changes or deviations and it may be necessary for the holder of the authorisation to apply for further Environmental Authorisation in terms of the regulations.
6. The holder of an Environmental Authorisation must apply for an amendment of the Environmental Authorisation with the Competent Authority for any alienation, transfer or change of ownership rights in the property on which the activity is to take place.

7. This activity must commence within a period of ten (10) years from the date of issue of the Environmental Authorisation dated 27 January 2023 (i.e. expiry date 27 January 2033). If commencement of the activity does not occur within that period, the authorisation lapses and a new application for Environmental Authorisation must be made in order for the activity to be undertaken.
8. Construction must be completed within five (05) years of the commencement of the activity on site.

#### **Notification of authorisation and right to appeal**

9. The holder of the authorisation must notify every registered interested and affected party, in writing and within 14 (fourteen) calendar days of the date of this Environmental Authorisation, of the decision to authorise the activity.
10. The notification referred to must –
  - 10.1. specify the date on which the authorisation was issued;
  - 10.2. inform the interested and affected party of the appeal procedure provided for in the National Appeal Regulations, 2014;
  - 10.3. advise the interested and affected party that a copy of the authorisation will be furnished on request; and
  - 10.4. give the reasons of the Competent Authority for the decision.

#### **Commencement of the activity**

11. The authorised activity shall not commence until the period for the submission of appeals has lapsed as per the National Appeal Regulations, 2014, and no appeal has been lodged against the decision. In terms of Section 43(7), an appeal under Section 43 of the National Environmental Management Act, Act No. 107 of 1998, as amended will suspend the Environmental Authorisation or any provision or condition attached thereto. In the instance where an appeal is lodged you may not commence with the activity until such time that the appeal has been finalised.

#### **Management of the activity**

12. The project will be developed in phases. A final site layout plan, per phase, for the power line (with micro-siting of the powerline route and pylon structures) and all mitigation measures as dictated by the final site layout plan, must be submitted to the Department for approval prior to construction. A copy of the final site layout map per phase must be made available for comments to registered Interested and Affected

Parties, as applicable per phase, and the holder of this Environmental Authorisation must consider such comments. Once amended, the final development layout map must be submitted to the Department for written approval, prior to commencement of the activity. All available biodiversity information must be used in the finalisation of the layout map. Existing infrastructure must be used as far as possible. The layout map must indicate the following:

- 12.1. The final delineation of the centreline of the power line;
  - 12.2. Positions of all infrastructure as approved;
  - 12.3. The specific position of the pylon structures and foundation footprints;
  - 12.4. All existing infrastructure on site, especially roads;
  - 12.5. Any sensitive environmental features that will be affected by the power line; and
  - 12.6. All "no-go" and buffer areas.
13. The generic Environmental Management Programme (EMPr) for the substation and generic EMPr for powerline, submitted as part of the EIAR are not approved and must be amended to include measures, as dictated by the final site lay-out map, per phase, required as per condition 12 above and the provisions of this Environmental Authorisation. The generic EMPrs must be made available for comments to registered Interested and Affected Parties, as applicable per phase, and the holder of this Environmental Authorisation must consider such comments. Once amended, the final generic EMPrs must be submitted to the Department for written approval prior to commencement of the activity.
- 13.A The layout plan and EMPr to be submitted per applicable phase must include the linkage and details of the previous phase (if applicable) as well as indicating the remaining extent/phases yet to be submitted for approval.
14. The EMPrs must be implemented and strictly enforced during all phases of the project. It shall be seen as dynamic documents and shall be included in all contract documentation for all phases of the development when approved.
15. Changes to the approved EMPrs must be submitted in accordance to the EIA Regulations applicable at the time.
16. The Department reserves the right to amend the approved EMPrs should any impacts that were not anticipated or covered in the EIAR be discovered.

#### **Frequency and process of updating the EMPr**

17. The EMPr must be updated where the findings of the environmental audit reports, contemplated in Condition 24 below, indicate insufficient mitigation of environmental impacts associated with the

undertaking of the activity, or insufficient levels of compliance with the Environmental Authorisation or EMPr.

18. The updated EMPr must contain recommendations to rectify the shortcomings identified in the environmental audit report.
19. The updated EMPr must be submitted to the Department for approval together with the environmental audit report, as per Regulation 34 of the EIA Regulations, 2014 as amended. The updated EMPr must have been subjected to a public participation process, which process has been agreed to by the Department, prior to submission of the updated EMPr to the Department for approval.
20. In assessing whether to grant approval of an EMPr which has been updated as a result of an audit, the Department will consider the processes prescribed in Regulation 35 of the EIA Regulations, 2014 as amended. Prior to approving an amended EMPr, the Department may request such amendments to the EMPr as it deems appropriate to ensure that the EMPr sufficiently provides for avoidance, management and mitigation of environmental impacts associated with the undertaking of the activity.
21. The holder of the authorisation must apply for an amendment of an EMPr, if such amendment is required before an audit is required. The amendment process is prescribed in Regulation 37 of the EIA Regulations, 2014, as amended. The holder of the authorisation must request comments on the proposed amendments to the impact management outcomes of the EMPr or amendments to the closure objectives of the closure plan from potentially interested and affected parties, including the competent authority, by using any of the methods provided for in the Act for a period of at least 30 days.

## Monitoring

22. The holder of the authorisation must appoint an experienced Environmental Control Officer (ECO) for the construction phase of the development that will have the responsibility to ensure that the mitigation/rehabilitation measures and recommendations referred to in this Environmental Authorisation are implemented and to ensure compliance with the provisions of the approved EMPr.
  - 22.1. The ECO must be appointed before commencement of any authorised activities.
  - 22.2. Once appointed, the name and contact details of the ECO must be submitted to the *Director: Compliance Monitoring* of the Department.
  - 22.3. The ECO must keep record of all activities on site, problems identified, transgressions noted and a task schedule of tasks undertaken by the ECO.
  - 22.4. The ECO must remain employed until all rehabilitation measures, as required for implementation due to construction damage, are completed and the site is ready for operation.

### **Recording and reporting to the Department**

23. All documentation e.g. audit/monitoring/compliance reports and notifications, required to be submitted to the Department in terms of this Environmental Authorisation, must be submitted to the *Director: Compliance Monitoring* of the Department.
24. The holder of the Environmental Authorisation must, for the period during which the Environmental Authorisation and EMPr remain valid, ensure that project compliance with the conditions of the Environmental Authorisation and the EMPr are audited, and that the audit reports are submitted to the *Director: Compliance Monitoring* of the Department.
25. The frequency of auditing and of submission of the environmental audit reports must be as per the frequency indicated in the EMPr, taking into account the processes for such auditing as prescribed in Regulation 34 of the EIA Regulations, 2014 as amended.
26. The holder of the authorisation must, in addition, submit environmental audit reports to the Department within 30 days of completion of the construction phase (i.e. within 30 days of site handover) and a final environmental audit report within 30 days of completion of rehabilitation activities.
27. The environmental audit reports must be compiled in accordance with Appendix 7 of the EIA Regulations, 2014 as amended and must indicate the date of the audit, the name of the auditor and the outcome of the audit in terms of compliance with the Environmental Authorisation conditions as well as the requirements of the approved EMPr.
28. Records relating to monitoring and auditing must be kept on site and made available for inspection to any relevant and competent authority in respect of this development.

### **Notification to authorities**

29. A written notification of commencement must be given to the Department no later than fourteen (14) days prior to the commencement of the activity. The notice must include a date on which it is anticipated that the activity will commence, as well as a reference number.

### **Operation of the activity**

30. A written notification of operation must be given to the Department no later than fourteen (14) days prior to the commencement of the activity operational phase.





### **Site closure and decommissioning**

31. Should the activity ever cease or become redundant, the holder of the authorisation must undertake the required actions as prescribed by legislation at the time and comply with all relevant legal requirements administered by any relevant and Competent Authority at that time.

### **Specific conditions**

32. No activities will be allowed to encroach into a water resource without a water use authorisation being in place from the Department of Water and Sanitation.
33. A wetland buffer area of 11 m from the outer edge of wetland features and must be implemented for maintaining the freshwater resource features REC (Recommended Ecological Category) allowing the persistence of the current present ecological status as well as well as their functions and services.
34. No development is permitted within the identified no-go areas as detailed in the sensitivity maps
35. Anti-collision devices such as bird flappers must be installed where powerlines cross avifaunal corridors. The input of an avifaunal specialist must be obtained for the fitting of the anti-collision devices onto specific sections of the line once the exact positions of the towers have been surveyed and pegged.
36. A qualified ecologist must be commissioned to perform a final walk through of the alignment to identify all sensitive features including wetlands, drainage lines and all other watercourses, and protected plant or tree species that may be affected by the construction of the power line. This must inform the determination of the final delineation of the centreline within the assessed corridor as well as optimal pylon positions, as well as the final development layout plan that is to be submitted to the Department for approval as per conditions 12 and 13 above.
37. A permit must be obtained from the relevant nature conservation agency for the removal or destruction of indigenous, protected or endangered plant or animal species and a copy of such permit/s must be submitted to the Department for record keeping. Copies of the permit/s must be included in the final EMPr to be submitted to this Department for approval before commencement of construction activities.
38. Should any archaeological sites, artefacts, paleontological fossils or graves be exposed during construction work, work in the immediate vicinity of the find must be stopped, SAHRA must be informed, and the services of an accredited heritage professional obtained for an assessment of the heritage resources must be made
39. No exotic plants may be used for rehabilitation purposes. Only indigenous plants of the area may be utilised.

40. The holder of the authorisation is required to inform the Department of Agriculture Rural Development and Environmental Affairs (DARDEA), Department of Agriculture, Forestry and Fisheries (DAFF) and this Department should the removal of protected species, medicinal plants and "data deficient" plant species be required.
41. Vegetation clearing must be kept to an absolute minimum.
42. Construction must include design measures that allow surface and subsurface movement of water along drainage lines so as not to impede natural surface and subsurface flows. Drainage measures must promote the dissipation of storm water run-off.
43. An integrated waste management approach must be implemented that is based on waste minimisation and must incorporate reduction, recycling, re-use and disposal where appropriate. Any solid waste must be disposed of at a landfill licensed in terms of Section 20 (b) of the National Environment Management Waste Act, 2008 (Act No.59 of 2008).
44. Waste, which is not authorised for disposal on site as part of the approved development, must be dealt with according to relevant legislation or the Department's policies and practices.
45. The holder of Environmental Authorisation must prevent the occurrence of nuisance conditions or health hazards.
46. No effluent must be discharged into any storm water drain or furrow, whether by commission or by omission.

#### **General**

47. A copy of this Environmental Authorisation, the audit and compliance monitoring reports, and the approved EMP, must be made available for inspection and copying-
  - 47.1. at the site of the authorised activity;
  - 47.2. to anyone on request; and
  - 47.3. where the holder of the Environmental Authorisation has a website, on such publicly accessible website.
48. National government, provincial government, local authorities or committees appointed in terms of the conditions of this authorisation or any other public authority shall not be held responsible for any damages or losses suffered by the holder of the authorisation or his/her successor in title in any instance where construction or operation subsequent to construction be temporarily or permanently stopped for reasons of non-compliance by the holder of the authorisation with the conditions of authorisation as set out in this document or any other subsequent document emanating from these conditions of authorisation.

Date of original Environmental Authorisation: 27 January 2023



Dr Sabelo Malaza

Chief Director: Integrated Environmental Authorisations  
Department of Forestry, Fisheries and the Environment

Date of re-issue of Environmental Authorisation: 15/04/2025

## Annexure 1: Reasons for Decision

### 1. Information considered in making the decision

In reaching its decision, the Department took, *inter alia*, the following into consideration -

- a) The listed activities as applied for in the application form received on 13 May 2022.
- b) The information contained in the EIAr dated November 2022.
- c) The comments received from received from SAHRA, Eskom, Town and Regional Planning Govan Mbeki Local Municipality, DWS and interested and affected parties as included in the EIAr dated November 2022.
- d) Mitigation measures as proposed in the EIAr and the EMPr.
- e) The information contained in the specialist studies contained within the appendices of the EIAr dated November 2022 and as appears below:

Title	Prepared by	Date
Ecological Impact Assessment	Nkurenkuru Ecology and Biodiversity (Pty) Ltd	September 2022
Avifaunal Impact Assessment	Arcus Consulting	September 2022
Bats Impact Assessment	Camissa	June 2022
Soils and Agricultural Potential	the Biodiversity Company	June 2022
Visual Impact Assessment	Environmental Planning & Design CC	August 2022
Socio-Economic impact assessment	Urban-Econ Development Economist (Pty) Ltd	August 2022
Heritage (including Archaeology Palaeontology and Cultural Heritage)	CTS Heritage	August 2022
Traffic Assessment	JG Afrika	September 2022

### 2. Key factors considered in making the decision

All information presented to the Department was taken into account in the Department's consideration of the application. A summary of the issues which, in the Department's view, were of the most significance is set out below.

- a) The findings of all the specialist studies conducted and their recommended mitigation measures.
- b) The need for the proposed project stems from the provision of electricity to the national grid.

- c) The EIA dated November 2022 identified all legislation and guidelines that have been considered in the preparation of the EIA.
- d) The location of the proposed Electrical Grid Infrastructure.
- e) The methodology used in assessing the potential impacts identified in the EIA dated November 2022 and the specialist studies have been adequately indicated.
- f) A sufficient public participation process was undertaken, and the applicant has satisfied the minimum requirements as prescribed in the EIA Regulations, 2014 as amended for public involvement.

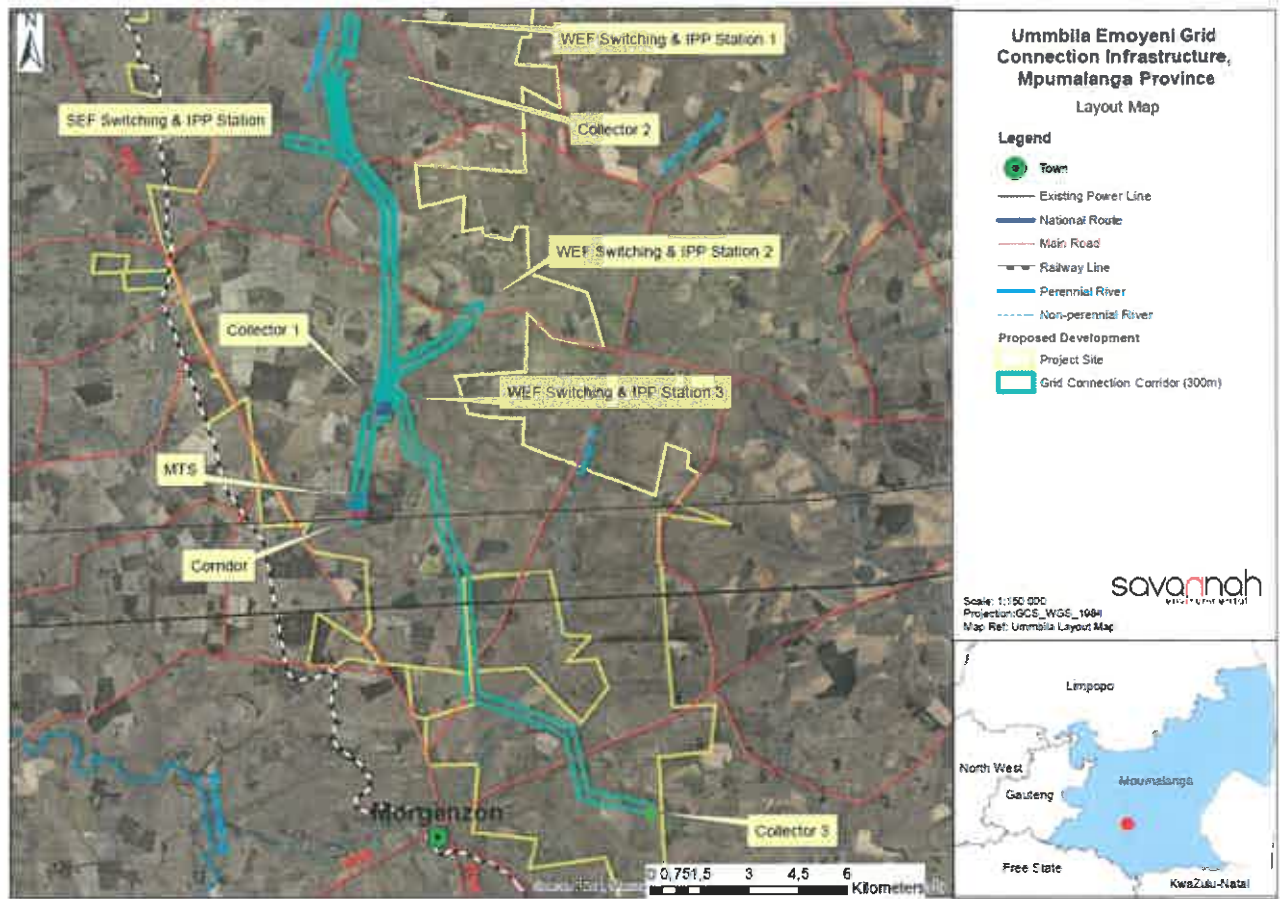
### 3. Findings

After consideration of the information and factors listed above, the Department made the following findings -

- a) The identification and assessment of impacts are detailed in the EIA dated November 2022 and sufficient assessment of the key identified issues and impacts have been completed.
- b) The procedure followed for impact assessment is adequate for the decision-making process.
- c) The information contained in the EIA dated November 2022 is deemed to be accurate and credible.
- d) The proposed mitigation of impacts identified and assessed adequately curtails the identified impacts.
- e) EMP measures for the pre-construction, construction and rehabilitation phases of the development were proposed and included in the EIA and will be implemented to manage the identified environmental impacts during the construction phase.

In view of the above, the Department is satisfied that, subject to compliance with the conditions contained in the Environmental Authorisation, the authorised activities will not conflict with the general objectives of integrated environmental management laid down in Chapter 5 of the National Environmental Management Act, 1998 and that any potentially detrimental environmental impacts resulting from the authorised activities can be mitigated to acceptable levels. **The Environmental Authorisation is accordingly granted.**

## Annexure 2: Locality Plan



## Annexure 3: SG Codes

**Umbila Emoyeni Distribution Electrical Grid Infrastructure associated with Umbila Emoyeni Two and Three Wind Energy Facilities affected properties and coordinates**

SG Code	Farm Name	Farm Number	Portion
TOIS00000000026800006	The Brakfontein Settlement	268	6
TOIS00000000026800007	The Brakfontein Settlement	268	7
TOIS00000000026800010	The Brakfontein Settlement	268	10
TOIS00000000026800011	The Brakfontein Settlement	268	11
TOIS00000000026800012	The Brakfontein Settlement	268	12
TOIS00000000026100015	Naudesfontein IS	261	15
TOIS00000000026100021	Naudesfontein IS	261	21
TOIS00000000026400000	Gelukspplaats	264	0
TOIS00000000026400003	Gelukspplaats	264	3
TOIS00000000026400004	Gelukspplaats	264	4
TOIS00000000026400005	Gelukspplaats	264	5
TOIS00000000026400006	Gelukspplaats	264	6
TOIS00000000026400008	Gelukspplaats	264	8
TOIS00000000026400009	Gelukspplaats	264	9
TOIS00000000026400010	Gelukspplaats	264	10
TOIS00000000026400011	Gelukspplaats	264	11
TOIS00000000026400012	Gelukspplaats	264	12
TOIS00000000042300000	Bekkersrust	423	0
TOIS00000000042300001	Bekkersrust	423	1
TOIS00000000042300002	Bekkersrust	423	2
TOIS00000000042300004	Bekkersrust	423	4
TOIS00000000042300005	Bekkersrust	423	5
TOIS00000000042300006	Bekkersrust	423	6
TOIS00000000042300010	Bekkersrust	423	10
TOIS00000000042300011	Bekkersrust	423	11
TOIS00000000042300012	Bekkersrust	423	12
TOIS00000000042300013	Bekkersrust	423	13

SG Code	Farm Name	Farm Number	Portion
TOIS00000000042300014	Bekkersrust	423	14
TOIS00000000042300015	Bekkersrust	423	15
TOIS00000000042300019	Bekkersrust	423	19
TOIS00000000042300020	Bekkersrust	423	20
TOIS00000000042300022	Bekkersrust	423	22
TOIS00000000042300023	Bekkersrust	423	23
TOIS00000000042300024	Bekkersrust	423	24
TOIS00000000042300025	Bekkersrust	423	25
TOIS00000000042200005	Klipfontein	422	5
TOIS00000000042200008	Klipfontein	422	8
TOIS00000000042200009	Klipfontein	422	9
TOIS00000000042200012	Klipfontein	422	12 (access road)
TOIS00000000042200013	Klipfontein	422	13
TOIS00000000042200014	Klipfontein	422	14
TOIS00000000042200016	Klipfontein	422	16
TOIS00000000042200017	Klipfontein	422	17
TOIS00000000042200019	Klipfontein	422	19
TOIS00000000042200020	Klipfontein	422	20
TOIS00000000045800018	Goedgedacht	458	18
TOIS00000000045800025	Goedgedacht	458	25
TOIS00000000045800027	Goedgedacht	458	27
TOIS00000000045800033	Goedgedacht	458	33
TOIS00000000042000008	Rietfontein	420	8
TOIS00000000042000009	Rietfontein	420	9
TOIS00000000042000010	Rietfontein	420	10
TOIS00000000042000011	Rietfontein	420	11
TOIS00000000042000012	Rietfontein	420	12
TOIS00000000042000015	Rietfontein	420	15
TOIS00000000042000016	Rietfontein	420	16
TOIS00000000042000018	Rietfontein	420	18
TOIS00000000042000019	Rietfontein	420	19
TOIS00000000042000022	Rietfontein	420	22
TOIS00000000042000032	Rietfontein	420	32



SG Code	Farm Name	Farm Number	Portion
TOIS000000000042100002	Sukkelaar	421	2
TOIS000000000042100025	Sukkelaar	421	25
TOIS000000000042100039	Sukkelaar	421	39
TOIS000000000042100040	Sukkelaar	421	40